



US009190852B2

(12) **United States Patent**
Bienfang et al.

(10) **Patent No.:** **US 9,190,852 B2**
(45) **Date of Patent:** **Nov. 17, 2015**

(54) **SYSTEMS AND METHODS FOR STABILIZING POWER RATE OF CHANGE WITHIN GENERATOR BASED APPLICATIONS**

(58) **Field of Classification Search**
CPC H02J 7/00; H02J 7/1446; Y10T 307/305; Y10T 307/406; Y10T 307/344
USPC 307/18, 29, 31
See application file for complete search history.

(71) Applicant: **Caterpillar Global Mining LLC**, Oak Creek, WI (US)

(56) **References Cited**

(72) Inventors: **David T. Bienfang**, Racine, WI (US); **Robert A. Hamann**, Oak Creek, WI (US); **Michael G. Onsager**, Franklin, WI (US); **Michael E. Brandt**, Racine, WI (US); **Marcelo C. Algrain**, Dunlap, IL (US)

U.S. PATENT DOCUMENTS

3,425,574 A 2/1969 Wilgrubs et al.
3,891,354 A 6/1975 Bosch
4,050,478 A 9/1977 Virtue et al.

(Continued)

(73) Assignee: **Caterpillar Global Mining LLC**, Oak Creek, WI (US)

FOREIGN PATENT DOCUMENTS

DE 22 51 904 4/1974
DE 23 31 617 1/1975

(Continued)

(*) Notice: Subject to any disclaimer, the term of this patent is extended or adjusted under 35 U.S.C. 154(b) by 659 days.

OTHER PUBLICATIONS

(21) Appl. No.: **13/624,600**

International Search Report and Written Opinion for International Application No. PCT/EP2007/003582, mail date Jan. 30, 2008, 23 pages.

(22) Filed: **Sep. 21, 2012**

(Continued)

(65) **Prior Publication Data**

US 2014/0084685 A1 Mar. 27, 2014

Primary Examiner — Carlos Amaya

(51) **Int. Cl.**

(74) *Attorney, Agent, or Firm* — Foley & Lardner LLP

H02J 1/10 (2006.01)
H02J 3/00 (2006.01)
H02J 3/14 (2006.01)
H02M 1/10 (2006.01)
H02J 7/00 (2006.01)
H02J 9/00 (2006.01)
H02J 7/14 (2006.01)
H02J 3/32 (2006.01)
H02J 7/34 (2006.01)

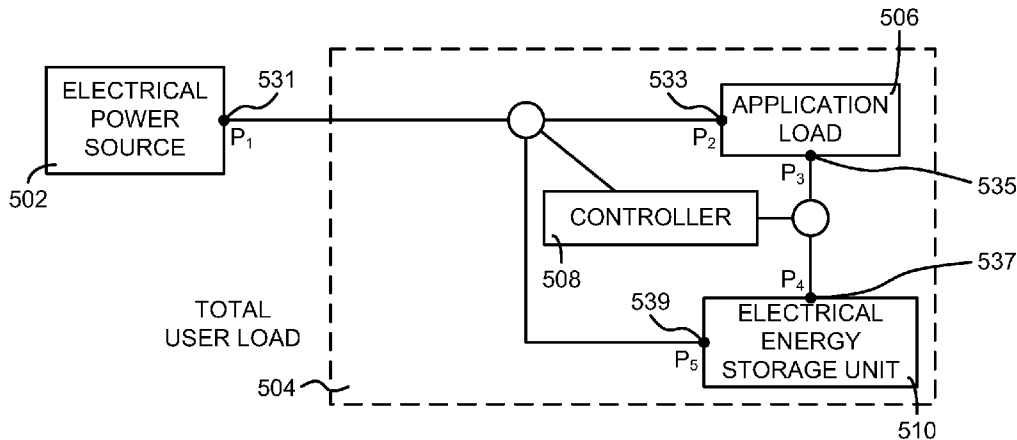
(57) **ABSTRACT**

Systems and methods for monitoring an electrical energy storage unit and a parameter related to the load and based on the monitoring, if the load parameter is greater than a second rate of change of electrical power for a second component of an electrical power system, providing power from the electrical energy storage unit to the second component until the load parameter and the second component have equivalent rates of change of electrical power.

(52) **U.S. Cl.**

CPC ... **H02J 7/00** (2013.01); **H02J 3/32** (2013.01); **H02J 7/1446** (2013.01); **H02J 9/00** (2013.01); **H02J 7/345** (2013.01); **Y10T 307/344** (2015.04)

20 Claims, 8 Drawing Sheets



(56)

References Cited

U.S. PATENT DOCUMENTS

4,230,022 A 10/1980 Bianchetta et al.
 4,533,900 A 8/1985 Muhlberger et al.
 4,606,313 A 8/1986 Izumi et al.
 4,763,473 A 8/1988 Ziplies et al.
 4,875,337 A 10/1989 Sugiyama et al.
 5,167,121 A 12/1992 Sepehri et al.
 5,295,353 A 3/1994 Ikari
 5,303,551 A 4/1994 Lee
 5,563,351 A 10/1996 Miller
 5,673,558 A 10/1997 Sugiyama et al.
 5,722,190 A 3/1998 Arnold
 5,852,934 A 12/1998 Chung et al.
 5,890,303 A 4/1999 Ishikawa et al.
 6,005,360 A 12/1999 Pace
 6,087,945 A 7/2000 Yasuda
 6,141,629 A 10/2000 Yamamoto et al.
 6,148,548 A 11/2000 Tohji
 6,164,069 A 12/2000 Takahashi et al.
 6,164,388 A 12/2000 Martunovich et al.
 6,175,217 B1 1/2001 Da Ponte et al.
 6,199,307 B1 3/2001 Kagoshima et al.
 6,282,891 B1 9/2001 Rockwood
 6,323,608 B1 11/2001 Ozawa
 6,326,763 B1 12/2001 King et al.
 6,339,737 B1 1/2002 Yoshimura et al.
 6,422,001 B1 7/2002 Sherman et al.
 6,460,332 B1 10/2002 Maruta et al.
 6,584,769 B1 7/2003 Bruun
 6,591,697 B2 7/2003 Henyan
 6,591,758 B2 7/2003 Kumar
 6,612,246 B2 9/2003 Kumar
 6,635,973 B1 10/2003 Kagoshima et al.
 6,650,091 B1 11/2003 Shiue et al.
 6,678,972 B2 1/2004 Naruse et al.
 6,683,389 B2 1/2004 Geis
 6,708,787 B2 3/2004 Naruse et al.
 6,725,581 B2 4/2004 Naruse et al.
 6,789,335 B1 9/2004 Kinugawa et al.
 6,799,424 B2 10/2004 Ioku et al.
 6,810,362 B2 10/2004 Adachi et al.
 6,820,356 B2 11/2004 Naruse et al.
 6,832,175 B2 12/2004 Adachi et al.
 6,864,663 B2 3/2005 Komiyama et al.
 6,870,139 B2 3/2005 Petrenko
 6,876,098 B1 4/2005 Gray, Jr.
 6,907,384 B2 6/2005 Adachi et al.
 6,922,990 B2 8/2005 Naruse et al.
 6,962,050 B2 11/2005 Hiraki et al.
 7,069,674 B2 7/2006 Arii
 7,078,825 B2 7/2006 Ebrahim et al.
 7,078,877 B2 7/2006 Salasoo et al.
 7,082,758 B2 8/2006 Kageyama et al.
 7,096,985 B2 8/2006 Charaudeau et al.
 7,146,808 B2 12/2006 Devier et al.
 7,174,826 B2 2/2007 Kerrigan et al.
 7,190,133 B2 3/2007 King et al.
 7,251,934 B2 8/2007 Lech et al.
 7,252,165 B1 8/2007 Gruenwald et al.
 7,258,183 B2 8/2007 Leonardi et al.
 7,275,369 B2 10/2007 Kim
 7,298,102 B2 11/2007 Sopko et al.
 7,356,991 B2 4/2008 Kim et al.
 7,378,808 B2 5/2008 Kuras et al.
 7,386,978 B2 6/2008 Ivantysynova et al.
 7,398,012 B2 7/2008 Koellner
 7,401,464 B2 7/2008 Yoshino
 7,430,967 B2 10/2008 Kumar
 7,439,631 B2 10/2008 Endou
 7,444,809 B2 11/2008 Smith et al.
 7,444,944 B2 11/2008 Kumar et al.
 7,448,328 B2 11/2008 Kumar
 7,456,509 B2 11/2008 Gray, Jr.

7,479,757 B2 1/2009 Ahmad
 7,518,254 B2 4/2009 Donnelly et al.
 7,531,916 B2 5/2009 Franklin et al.
 7,532,960 B2 5/2009 Kumar
 7,533,527 B2 5/2009 Naruse
 7,560,904 B2 7/2009 Alvarez-Troncoso
 7,571,683 B2 8/2009 Kumar
 7,596,893 B2 10/2009 Tozawa et al.
 7,628,236 B1 12/2009 Brown
 7,730,981 B2 6/2010 McCabe et al.
 7,748,279 B2 7/2010 Budde et al.
 8,022,663 B2 9/2011 Davis et al.
 8,147,255 B2 4/2012 Wu
 8,626,403 B2 1/2014 Onsager et al.
 2002/0104239 A1 8/2002 Naruse et al.
 2003/0089557 A1 5/2003 Eilinger
 2004/0021441 A1 2/2004 Komiyama et al.
 2004/0073468 A1 4/2004 Vyas et al.
 2005/0012337 A1* 1/2005 Yoshimatsu 290/40 C
 2005/0061561 A1 3/2005 Leonardi et al.
 2005/0139399 A1 6/2005 Gopal
 2005/0246082 A1 11/2005 Miki et al.
 2005/0263331 A1 12/2005 Sopko et al.
 2006/0061922 A1 3/2006 Mihai et al.
 2006/0125421 A1 6/2006 Costa
 2007/0080236 A1 4/2007 Betz et al.
 2007/0166168 A1 7/2007 Vigholm et al.
 2007/0234718 A1 10/2007 Vigholm
 2008/0157592 A1 7/2008 Bax et al.
 2008/0290842 A1 11/2008 Davis et al.
 2008/0295504 A1 12/2008 Vigholm et al.
 2009/0056324 A1 3/2009 Itakura et al.
 2009/0090102 A1 4/2009 Busse et al.
 2009/0159143 A1 6/2009 Nishikawa et al.
 2010/0097029 A1 4/2010 McCabe
 2010/0156180 A1 6/2010 Nishiyama
 2010/0289443 A1 11/2010 Mazumdar et al.
 2011/0254513 A1 10/2011 Kagoshima
 2012/0086220 A1 4/2012 Abdel-Baqi et al.

FOREIGN PATENT DOCUMENTS

DE 36 11 553 7/1987
 DE 41 02 621 8/1992
 DE 699 20 452 11/2005
 DE 1020050 17 127 11/2006
 JP 2000-170687 6/2000
 JP 2003-013866 1/2003
 JP 2004-100847 4/2004
 JP 2008-057687 3/2008
 JP 2008199844 8/2008
 JP 2009-167618 7/2009
 JP 4928613 2/2012
 KR 10199641737 12/1996
 KR 10300305 6/2001
 WO WO-90/10850 9/1990
 WO WO-2004/074686 9/2004
 WO WO-2010/058768 5/2010

OTHER PUBLICATIONS

International Search Report and Written Opinion for International Application No. PCT/US2010/048257, mail date May 27, 2011, 7 pages.
 International Search Report and Written Opinion for International Application No. PCT/US2011/052966, mail date Apr. 10, 2012, 9 pages.
 International Search Report and Written Opinion for International Application No. PCT/US2011/057491, mail date May 18, 2012, 9 pages.
 International Search Report and Written Opinion for International Application No. PCT/US2011/052950, mail date Apr. 16, 2012, 7 pages.

* cited by examiner

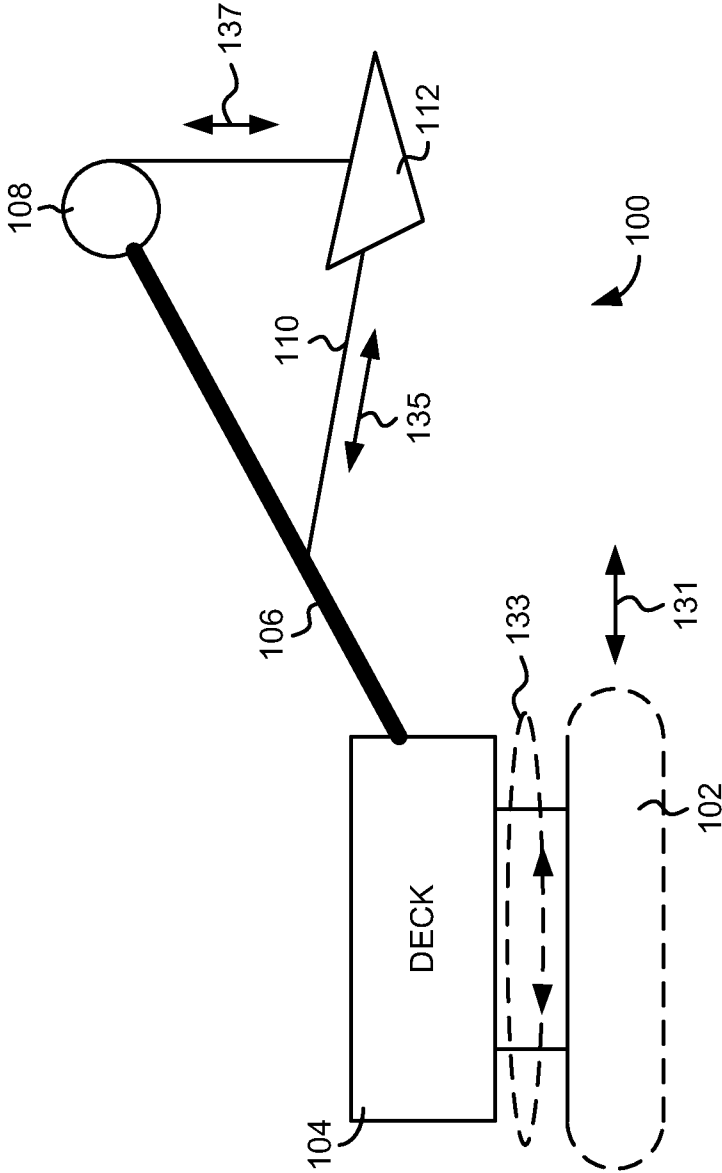


FIG. 1

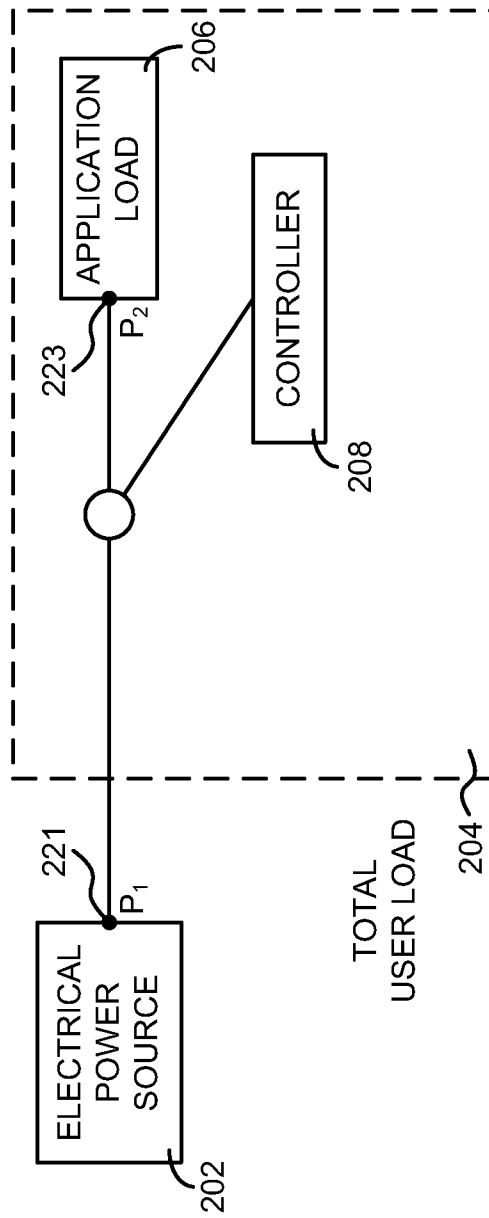


FIG. 2

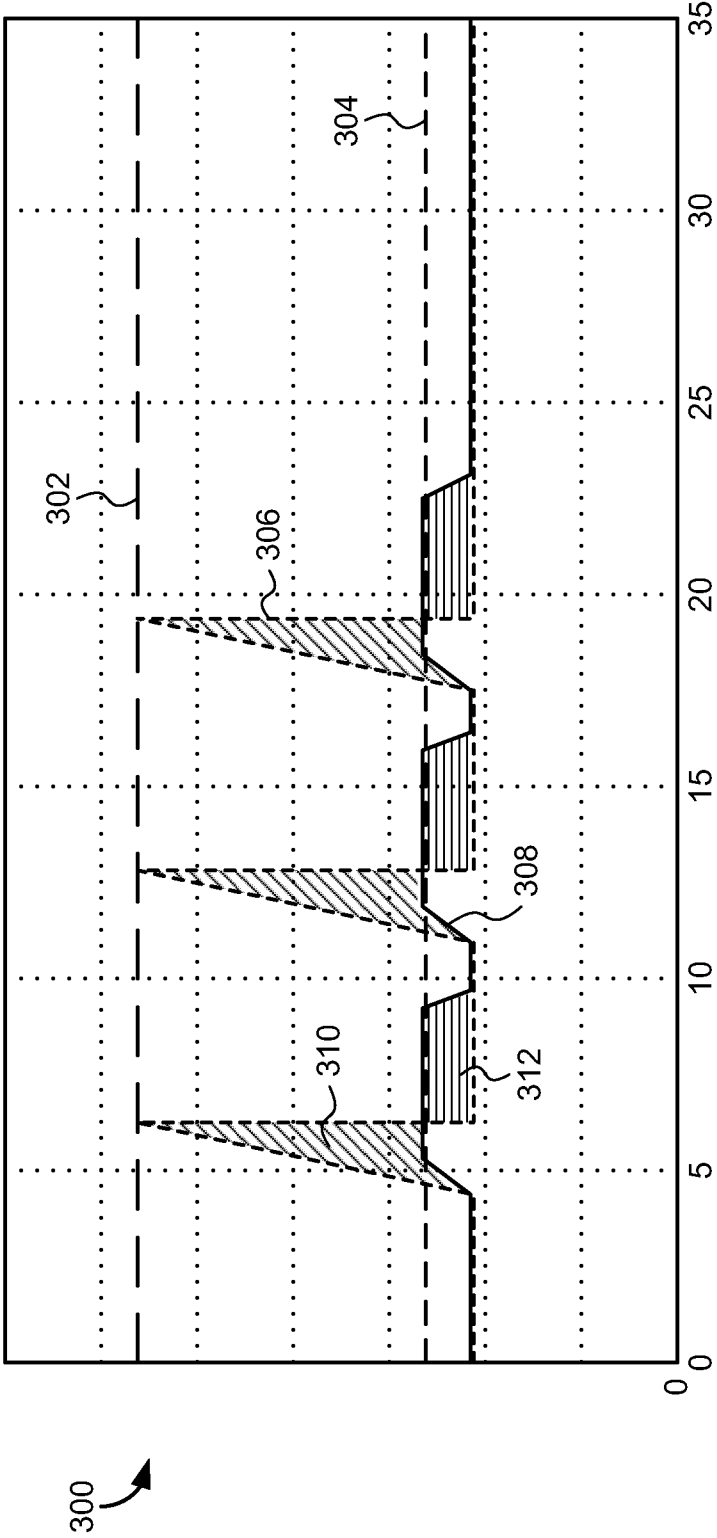


FIG. 3

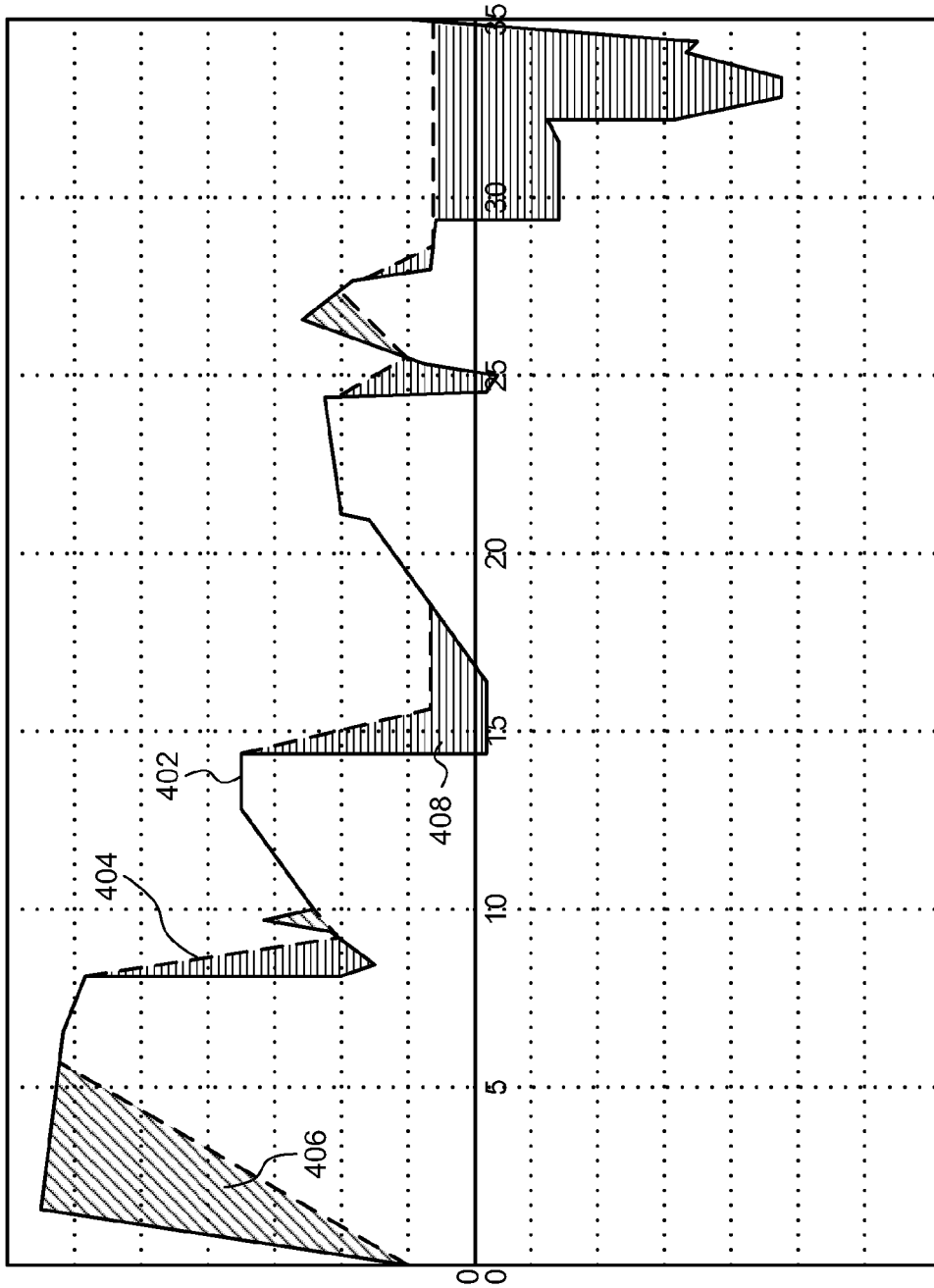


FIG. 4

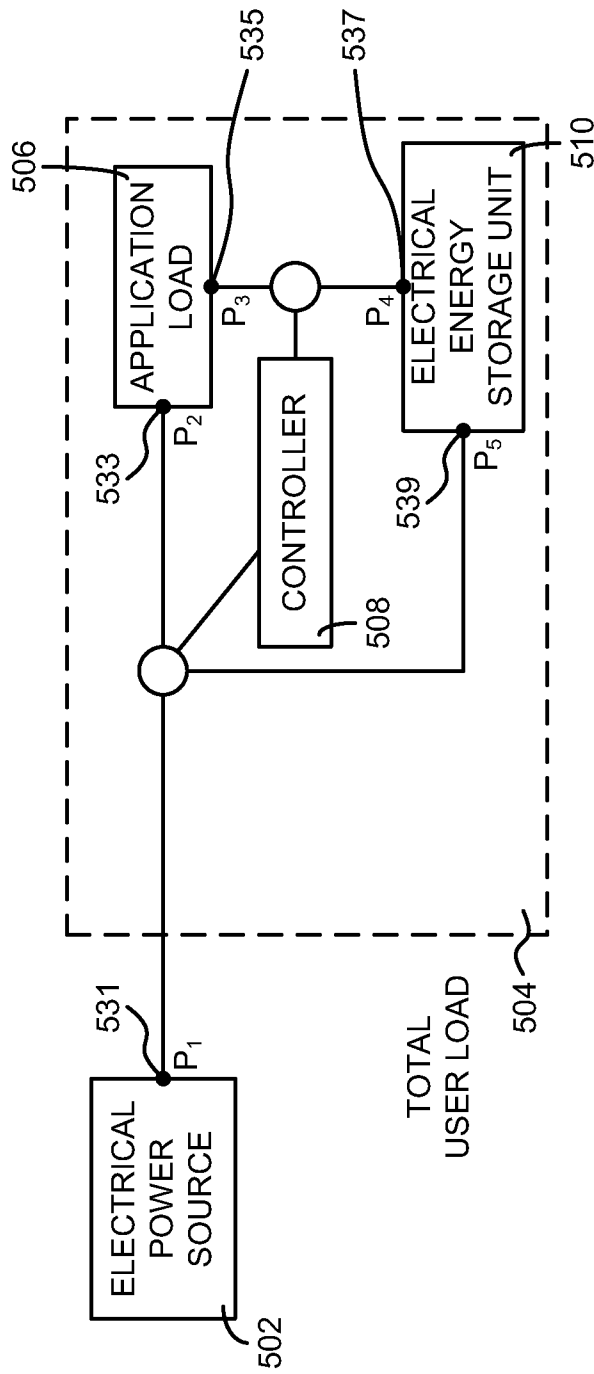


FIG. 5

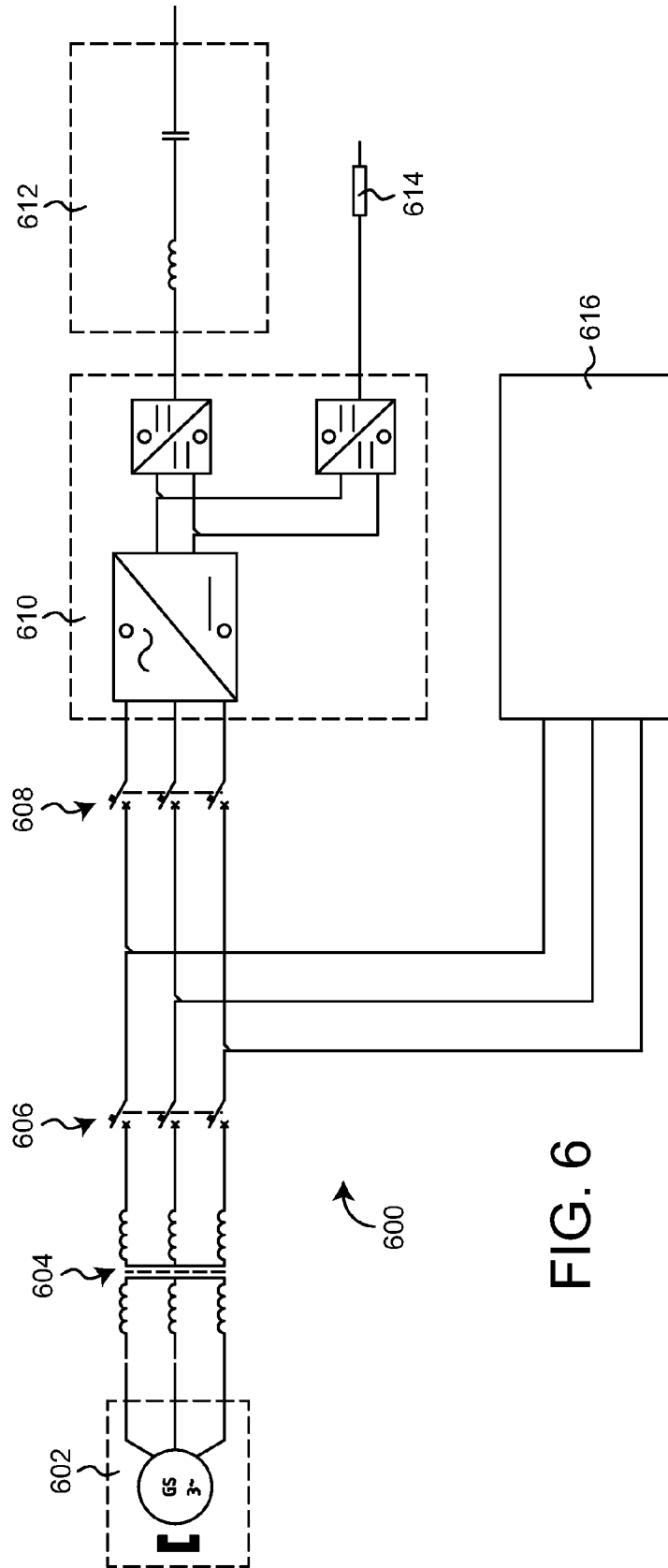


FIG. 6

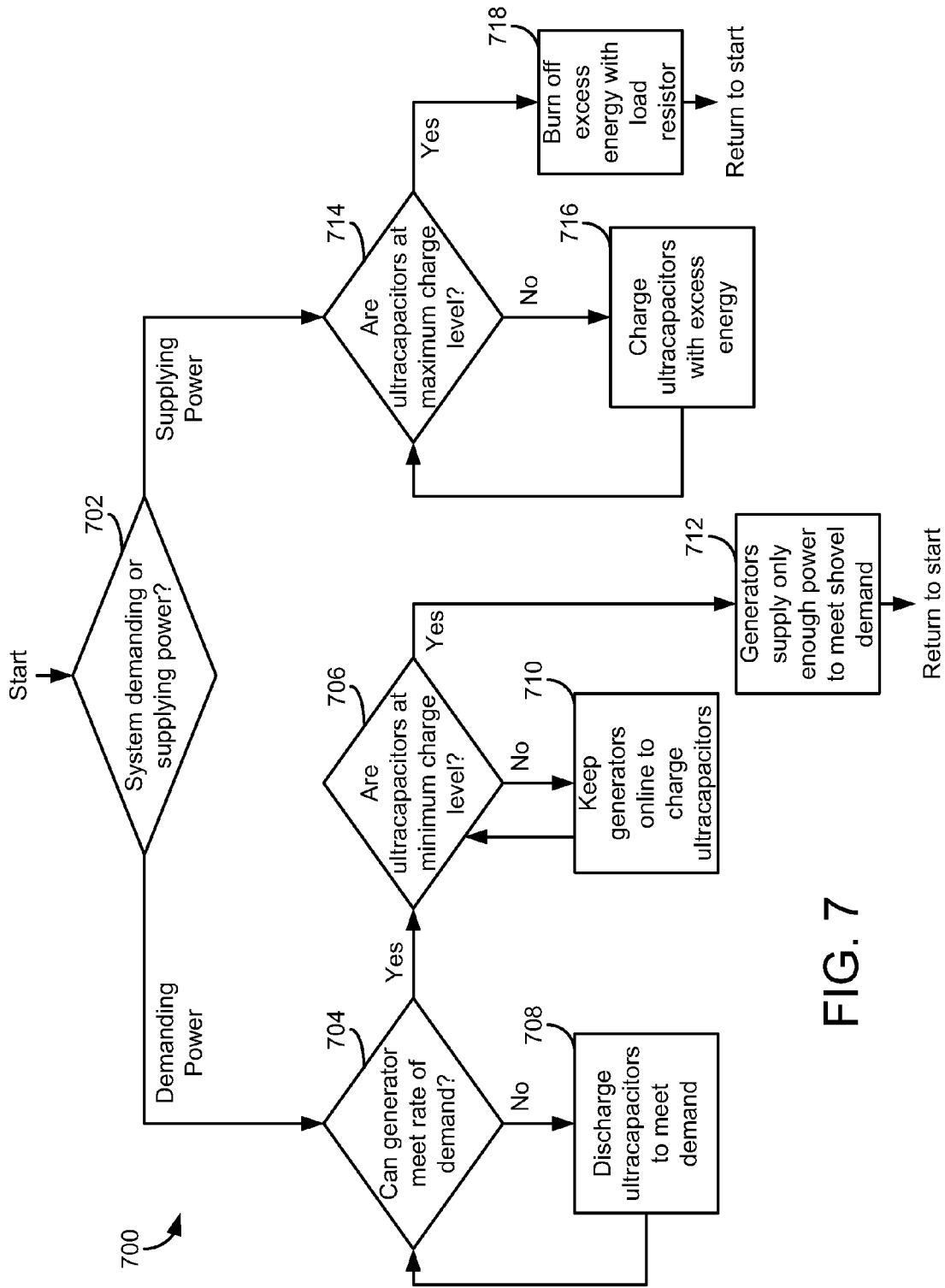


FIG. 7

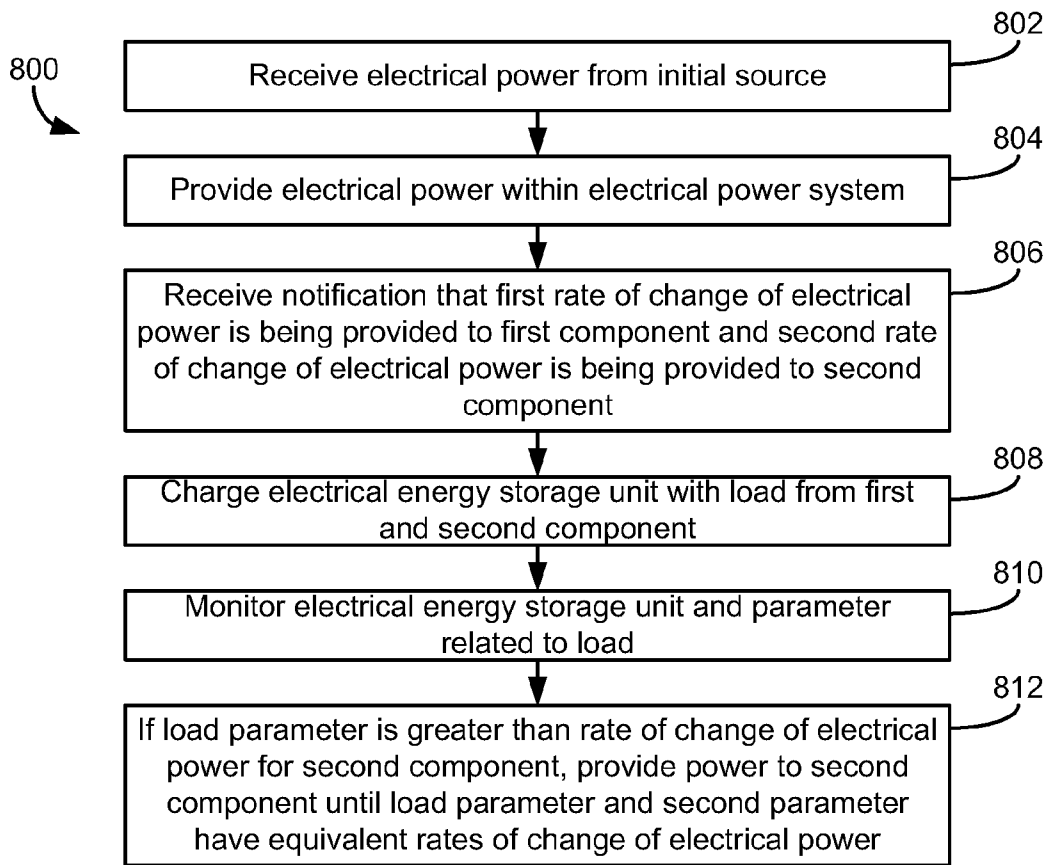


FIG. 8

1

SYSTEMS AND METHODS FOR STABILIZING POWER RATE OF CHANGE WITHIN GENERATOR BASED APPLICATIONS

TECHNICAL FIELD

The present disclosure relates generally to electrical power systems, and particularly to systems for stabilizing electrical power rate of change within generator based applications.

BACKGROUND

Many applications depend on electricity supplied by an electrical power distribution network, such as the electrical power grid operated by an electrical power utility company. Commercial and industrial applications may draw significant electrical power, such as machinery, generator applications, etc. Loads may be dynamic and the power rate of change between the electrical power machinery and the generator power source may be imbalanced. The effect of the imbalance between the power rates of change may lead to transients within the system. Transients may lead to temporary outages in the electrical power distribution network. The cumulative effect of transients may lead to degradation and failure of applications, such as reducing the life of an engine, a generator, etc. The power rate of change imbalance may also lead to an increase in the fuel consumption rate of the electrical machinery, because the machinery has to consume more fuel to account for the transients within the system.

One application that draws significant electrical power is mining. In a mining operation, the electrical power distribution network feeds a variety of loads, ranging from small industrial motors to large draglines. Electrical mining excavators, such as electric shovels and draglines, present a cyclic load to the electrical power distribution network. In some instances, the electrical powered machinery, such as the electrical mining excavator, may operate using a generator as a power source, with a greater rate of power demand than what the generator can supply.

A conventional system matches the peak load of the components within the system. For example, an upper limit is set for the electrical power drawn from the electrical power source. When the input electrical power drawn by the machinery exceeds the upper limit, then the electrical power is supplied by an electrical energy storage unit. An exemplary method is disclosed in U.S. Pat. No. 8,147,225 that was issued on May 8, 2012.

To improve performance, reliability, economic feasibility, etc. of an electrical power system, it is important to analyze the power demand, compare the power demand between components, and then match the power demands of the components within the system. In some implementations, additional generators have been added to the system until the rate of power was stabilized throughout the system. However, cost and other factors may limit the ability of additional generators to be used. Methods and systems which reduce the number of components in the electrical power system while stabilizing the rate of average power demand within the system are desirable.

SUMMARY

In one implementation, a computer-implemented method for stabilizing power rate of change in an electrical power system using an electrical energy storage unit, is disclosed.

2

In another implementation, an electrical power system for stabilizing power in an electrical power system using an electrical energy storage unit, is disclosed.

In yet a further implementation, a computer readable medium having instructions therein, the instructions being executable by a processor to cause the processor to perform operations for stabilizing power rate of change in an electrical power system using an electrical energy storage unit, is disclosed.

BRIEF DESCRIPTION OF THE DRAWINGS

FIG. 1 illustrates a general schematic of an electric shovel;

FIG. 2 illustrates an overview of a cyclic load drawing electrical power from an electrical power source;

FIG. 3 illustrates an application where a generator is providing power to a system with instantaneous demands;

FIG. 4 illustrates a cyclical power curve with regeneration;

FIG. 5 illustrates an overview of a cyclic load drawing electrical power from an electrical power source and an electrical energy storage unit;

FIG. 6 illustrates a schematic of the electrical power system with the integrated electrical energy storage unit control system;

FIG. 7 illustrates a flow chart of steps for stabilizing power rate of change in an electrical power system; and

FIG. 8 illustrates a flow diagram of a method for stabilizing power rate of change in an electrical power system using an electrical energy storage unit.

DETAILED DESCRIPTION

The present disclosure relates to a supplemental electrical power system for generator applications. The supplemental electrical power system allows the generators that supply power to be sized based according to average power load of the system rather than the peak load of the system. An electrical energy storage unit system provides a stable power source to the electrical power system, which allows an electrical energy storage unit control system to respond quicker than the generators.

Mining excavators may include electric shovels and draglines. FIG. 1 illustrates a general schematic of an electric shovel 100 to show a mining excavator that consumes significant electrical power. The major components may include crawler 102, deck 104, boom 106, hoist 108, handle 110, and dipper 112. Electric motors may enable various motions to operate electrical shovel 100. Motion 131 propel (forward/reverse directions) may refer to travel of the entire electric shovel 100 with respect to the ground. Motion 133 swing (away/return directions) refers to rotation of deck 104 with respect to crawler 102. Motion 135 crowd (crowd/retract directions) refers to positioning of dipper 112 with respect to boom 106. Motion 137 hoist (hoist/lower directions) refers to positioning dipper 112 up and down with respect to the ground. In some implementations, multiple electric motors may be used to provide each motion.

The electric shovel 100 typically performs a series of repetitive operations. For example, it may propel forward near a bank, swing the dipper 112 into position, crowd the dipper 112 into the bank, hoist the dipper 112 to scoop out material, retract the dipper 112, propel in reverse to clear the bank, propel forward to a dump site, swing the dipper 112 into position, lower the dipper 112, and dump the load. It then returns to the bank and repeats the operations. Motors may, then, often accelerate in one direction, brake, and accelerate in the opposite direction. The mechanical load on a motor

may be highly variable. For example, a motor hoisting the dipper **112** full of heavy material, dumping the material, and lowering an empty bucket may use a variety of different mechanical loads.

From one electrical power perspective, the electric shovel **100** presents a cyclic load to an electrical power source. As a function of operating time, the electrical power drawn by the electric shovel **100** varies cyclically. The variation in the power may be significant, e.g., the average power drawn by these machines may be about 55% of their peak power demand. From another electrical power perspective, the electrical shovel **100** may draw power from a generator power source. At some instances and/or during some operations, such as hoisting the dipper **112** full of heavy material, the electric shovel **100** may require more instantaneous power than what the generator can supply.

Under normal operation, an electric motor converts electrical energy into mechanical energy. An electric motor may also be operated in reverse as a generator to convert mechanical energy to electrical energy. Under normal operation, an electric motor draws (consumes) electrical power from an electrical power source. When an electric motor under motion is stopped, the residual mechanical energy may be converted to electrical energy. Herein, a time interval during which an electrical load is drawing electrical energy is referred to as a motoring interval; and a time interval during which an electrical load is generating electrical energy is referred to herein as a regeneration interval.

In FIG. 2, an overview of a cyclic load drawing electrical power from an electrical power source is shown. Electrical power source **202** (e.g., a generator) may feed total user load **204**. In this example, total user load **204** may include application load **206**. Application load **206** may include the load of the motor driving the machinery, while the total user load **204** may include the load of all of the machinery within the electrical power system. Controller **208** may control the electrical power transferred between electrical power source **202** and application load **206**. Electrical power P1 **221** represents the output electrical power from electrical power source **202**.

Electrical power P2 **223** represents the input electrical power drawn by application load **206**, which, in this example, is a cyclic load. The input electrical power required to operate a load is referred to as the electrical power demand of the load.

FIG. 3 illustrates an application where a generator is providing power to a system with instantaneous demands. Power curve **300** is illustrated as follows: Generator-rated power required without electrical energy storage unit control system **302**, generator-rated power required with electrical energy storage unit control system **304**, system demand **306**, generator supply **308**, electrical energy storage unit control system discharging (**310**; indicated with diagonal lines), and electrical energy storage unit control system charging (**312**; indicated with horizontal lines).

As the high instantaneous power demand is made (illustrated as a rapid spike in system demand **306**), the electrical energy storage unit control system **610** provides power stored in an electrical energy storage unit(s) **510** to the system to supplement the capacity of the generator(s), at **310**. Without the electrical energy storage unit control system **610**, a high rated power, illustrated as **302**, is required of the generator(s). With the electrical energy storage unit control system **610**, generators having a lower rated power, illustrated as **304**, may be utilized. As the power demand **306** of the system decreases, the electrical power system begins to recharge the electrical energy storage unit(s) **510** at **312**. The generators continue to supply **308** electrical energy to the system beyond demand **306**, with the excess energy charging the energy

storage unit(s) **510**. After a particular amount of charging time (e.g., once the electrical energy storage unit(s) **510** is near the full charge), then the electrical energy storage unit control system **610** signals the generator to reduce the power output to the electrical energy storage unit(s) **510**.

FIG. 4 illustrates a cyclical power curve with regeneration. Power curve **400** is illustrated as follows: shovel demand **402**, generator supply **404**, electrical energy storage unit control system discharging (**406**; illustrated with diagonal lines), and electrical energy storage unit control system recharging (**408**; illustrated with horizontal lines). As described in further detail below, power curve **400** may represent a single cycle in which a mining shovel picks up a load of material, pulls back, rotates, drops the material into a vehicle to remove the material from the area, rotates back towards the mining area, and stops.

Regeneration is shown in FIG. 4, e.g., the electrical shovel **100** may consume power, but will also have the ability to generate power and reapply that power to the electrical power system. In a brief overview, during times of decreased demand, an electrical energy storage unit control system **610** (as illustrated in FIG. 6) may store electrical energy in electrical energy storage units **510** (as illustrated in FIG. 5). When demand increases, the stored energy may be used to supplement the energy provided by the generator(s) to meet the increased demand.

If the electrical energy storage unit(s) **510** becomes fully charged, while the electric shovel **100** is using power from the generator, then the electrical energy storage unit control system **610** may redirect the power to a resistor(s) **614** (as illustrated in FIG. 6). The resistor(s) **614** is used to dissipate some of the excess energy in the system as thermal energy, or heat. The electrical energy storage unit control system **610** ensures that the electrical energy storage unit(s) **510** can efficiently absorb power and effectively apply the power within the system. In some implementations, the electrical energy storage unit control system **610** may direct power to the resistor(s) **614** only when necessary to ensure a stabilized system.

The instantaneous demands of the system can be met by using a generator capacity based upon peak power demand. The electrical energy storage unit control system **610** reduces the generator capacity and/or the amount of generators needed to stabilize/meet power demand, which lowers cost, noise and heat of the electrical power system.

As illustrated in FIG. 4, at 0 seconds, a dig cycle for the electrical shovel **100** begins. For example, the electric shovel **100** may be about to engage a bank to recover material. The generator may be idle at 0 seconds. In the illustrated embodiment, the generator **404** ramps up to meet the demand of the shovel **402** but does not have the capacity to meet the power demand as quickly as is required. To achieve the demanded power output while using a generator having a smaller capacity, the electrical energy storage unit control system **610** signals the electrical energy storage unit(s) **510** to discharge **406** and supplement the power supplied by the generator to meet the power demand of the machine. The electrical energy storage unit(s) **510** continue to supplement the power supplied by the generator until the generator output power level reaches the level of demand at approximately 5-6 seconds.

At 7-8 seconds, the electric shovel **100** disengages from the bank, pulls back, or performs another operation causing a decrease in the power demanded by the load. As the shovel demand **402** decreases, the generator power output **404** slowly ramps down. The generator power output ramps down more slowly than the sharp decrease in demand, generating more power than is needed by the shovel. The excess power is used to recharge the electrical energy storage unit(s) **510**.

Between 8-14 seconds, the power demand **402** of the load increases gradually. The electric shovel **100** may be swinging the bucket to the position of a repository such as a truck that removes the material from the area and/or hoisting the dipper **112** up to a height to empty the material into the truck. During this time period, the generator supply **404** generally tracks the power demand **402**, indicating that the generator is able to meet demand without supplemental power from the electrical energy storage unit(s) **510**. During a small period of time around 9-10 seconds, demand momentarily spikes above a level that can be instantaneously met by the generator, and the electrical energy storage unit(s) **510** are discharged to provide the momentary power demand.

At 14 seconds, regeneration is shown in the form of the electrical energy storage unit control system recharging **408**. The electric shovel **100** has stopped swinging and may be dipping the bucket to empty the material into a truck. At this moment (e.g., from approximately 14 seconds to 17 seconds), the motor of the shovel begins regenerating energy back into the electrical system (e.g., converting kinetic energy into electrical energy) as illustrated by the shovel demand **402** below zero. The energy regenerated into the electrical system is used to recharge the electrical energy storage unit(s) **510**. Additionally, during the time period starting at 14 seconds, the generator begins to reduce power output as a result of the decreased demand until it reaches an idle level. From 14 seconds until approximately 18 seconds, the generator supply **404** remains greater than the demand, and the excess energy is also used to recharge electrical energy storage unit(s) **510**. In some embodiments, if the energy regenerated by the load and the excess energy generated by the generator cause the charge level of the electrical energy storage unit(s) **510** to exceed a maximum charge level, the excess energy may be dissipated using a resistor(s) **614**.

From 18 to 20 seconds, the dipper **112** may be lowered back to the ground in preparation for retrieving another bucket full of material or perform another operation associated with an increase in shovel demand **402**. Again, the generator is able to meet the power demand of the load and no supplemental energy is required from the electrical energy storage unit(s) **510**.

At 24 seconds, the lowering motion of the dipper **112** is stopped, meaning the shovel demand **402** decreases, and the shovel motor momentarily generates energy into the electrical system. The regenerated energy and the excess energy generated by the generator are used to recharge the electrical energy storage unit(s) **510**. At 25 seconds, another sharp instantaneous spike in demand **402** from the load is received that cannot be fully met by the generator supply **404**. The electrical energy storage unit(s) **510** is discharged to supplement the generator supply **404** until the generator is able to ramp up and meet the demand.

From 30-35 seconds, the electrical shovel **100** is slowed to a stop, causing the motor to regenerate a substantial amount of power into the electrical system. This regenerated power, as well as any excess power generated by the generator, are again used to recharge the electrical energy storage unit(s) **510**.

Referring to FIG. 5, an overview of a cyclic load drawings electrical power from an electrical power source and an electrical energy storage unit is illustrated. Electrical power source **502** feeds total user load **504**. In this example, total user load **504** may include application load **506** and electrical energy storage unit **510**. Controller **508** controls the electrical power transferred between electrical power source **502** and electrical energy storage unit **510**, and between application load **506** and electrical energy storage unit **510**.

Electrical power **P1 531** represents the output electrical power from electrical power source **502**. Electrical power **P2 533** represents the input electrical power drawn by application load **506**, which, in this example, is a cyclic load. Electrical power **P3 535** represents the electrical power generated by application load **506** in the regeneration region. Electrical power **P4 537** represent the electrical power received by electrical energy storage unit **510** from application load **506**. Electrical power **P5 539** represents the output electrical power from electrical energy storage unit **510**.

An example of electrical energy storage unit **510** may include a capacitor. The capacitor may include an ultracapacitor that is capable of high energy or power density. Multiple capacitors may be connected in series and/or parallel. Current flowing into the capacitor charges the capacitor and electrical energy is stored via charge separation at the interface. The stored electrical energy may then later be used to output an electrical current. Electrical power **P3 535** may, for example, be generated by application load **506** and then fed as electrical power **P4 537** to charge electrical energy storage unit **510**. In addition, electrical power **P1 531** output by electrical power source **502** may be fed as electrical power **P5 539** to charge electrical energy storage unit **510**.

Referring to FIG. 6, a schematic **600** of the electrical power system with the integrated electrical energy storage unit control system is illustrated. The electrical power system is represented by generator **602** as the power source, transformer array **604**, field switch **606** and switch gear **608**, electrical energy storage unit control system **610**, capacitor system **612**, resistor(s) **614**, and load equipment **616**. Generator **602** supplies power to a cyclic load. In some implementations, generator **602** may be assisted by electrical energy storage unit control system or regenerate energy from the load. Field switch **606** may be located off-board from the electrical machinery. Switch gear **608** may be located on-board the electrical machinery. Field switch **606** and switch gear **608** may perform difference functions for the electrical machinery.

Electrical energy storage unit control system **610** may include an active front end to put power back online as well as controls within drive units to either route power to the capacitor system **612** or resistor(s) **614**. Capacitor system **612** may include electrical components, such as inductors and capacitors. Electrical energy storage unit control system **610** may be disconnected from the electrical power system via switch gear **608**. Electrical energy storage unit control system **610** may be managed by a controller.

In FIG. 7, a flow chart of steps for stabilizing power rate of change within an electrical power system is illustrated. At **702**, a determination is made as to whether the electrical power system, e.g., of the electrical machinery, such as the shovel **100** shown in FIG. 1, is supplying or demanding power. The electrical power system may include a generator, electrical energy storage unit and a load. When the load is consuming power, then the electrical machinery and control logic may be in motoring mode. When the load is regenerating power, then the electrical machinery and control logic may be in generating mode.

If the load is supplying power, such as in regeneration, then a determination, at **714**, may be made as to whether the electrical energy storage unit(s) is at the maximum charge level. If the electrical energy storage unit(s) are above their desired state of charge, as determined by the system, then the excess power is directed to a resistor(s) at **718** and the process passes to **702**. If the electrical energy storage unit(s) is below its desired state of charge, then the electrical energy storage unit(s) is charged with power at **716**.

If the load is demanding power, then a determination is made as to whether the generator can meet the power demand at **704**. If the generator cannot meet the power demand, then the electrical energy storage unit may be discharged to supplement the power from the generator to help meet the power demand at **708**.

If the generator can meet the power demand, then a determination is made, at **706**, whether the electrical energy storage unit(s) is at its desired state of charge. If not, then the generator is kept online to charge the electrical energy storage unit(s) at **710**. Once the electrical energy storage unit(s) are charged to the desired level, then the generator supplies all the requisite amount of power to meet the demand of the machinery, at **712**. The process then returns to **702**. The desired level of charge may include a range of values that is determined by the system and/or the type of electrical energy storage unit(s) used. In a non-limiting example, the desired state of charge for a minimum charge may be a target of 30% while the desired state of charge for a maximum charge may be a target of 90%.

In FIG. **8**, a flow diagram of a method for stabilizing power rate of change in an electrical power system using an electrical energy storage unit is shown. Method **800** is provided by way of example, as there are a number of ways to carry out the methods according to the present disclosure. Method **800** shown in FIG. **8** may be executed or otherwise performed by one of a combination of various systems. For example, method **800** may be implemented by a computer, a computer program product, a computer program, a server, a client-server relationship, etc. Method **800** is described herein as carried out by schematic **600** of FIG. **6**, by way of example.

The example method **800** may begin at block **802**, where electrical power is received from an initial source. The initial source can be a battery, a generator, or any other appropriate power source.

At block **804**, electrical power is provided within the electrical power system. For example, electrical power may be provided to/from the generator to the electrical machinery. In some implementations, the electrical energy storage unit system may be integrated into the first component of the electrical power system, such as the electrical machinery.

At block **806**, a notification is received that the first rate of change of electrical power is being provided to a first component of the electrical power system and a second rate of change of electrical power is being provided to a second component of the electrical power system.

For example, the first component of the electrical power system may include a device configured to operate using a generator. The device may include an electric rope shovel, a long wall miner, an electric power drill, etc. In some implementations, the device includes a mining excavator as shown in FIG. **1**. The mining excavator may include an electric shovel, a dragline, etc. The second component of the electrical power system may include a generator, a generator application, at least two generators, etc.

At block **808**, an electrical energy storage unit is charged with a load from the first and the second component of the electrical power system. For example, the electrical energy storage unit may include a capacitor. The capacitor may be charged with a load from the electrical machinery or from the generator during a non-peak power demand period.

At block **810**, the electrical energy storage unit and a parameter related to the load are monitored. For example, an electrical energy storage unit control system may monitor the electrical energy storage unit and the load requirements.

At block **812**, based on the monitoring, if the load parameter is greater than the second rate of change of electrical

power for the second component of the electrical power system, providing power from the electrical energy storage unit to the second component until the load parameter and the second component have equivalent rates of change of electrical power. For example, the electrical energy storage unit control system may control whether to provide supplemental power from the electrical energy storage unit.

In another example, if the electrical power system is operating with a regenerative load and the electrical energy storage unit is charged, then a resistor may absorb electrical power from the electrical power system. In other implementations, the resistor may absorb electrical power from the electrical power system if the rate regeneration exceeds the charging capacity of the electrical energy storage unit.

If the load parameter is less than or equal to the rate of change of power for the second component of the electrical power system, the electrical energy storage unit may be recharged.

INDUSTRIAL APPLICABILITY

Methods and systems described herein allow the generator(s) that supply power to be sized accordingly to the average load of the electrical power system instead of the peak load of the system. The smaller number of generators lowers the initial purchase and/or rental cost to effectively operate the electrical machinery, such as the mining excavator. The electrical energy storage unit control system provides a more stable power source since the control system can respond more quickly than a generator to stabilize the power within the electrical power system. The integration of the electrical energy storage unit system into the machinery provides high speed supplemental power that reduces the instantaneous demand on the generator(s).

The construction and arrangement of the systems and methods as shown in the various exemplary embodiments are illustrative only. Although only a few embodiments have been described in detail in this disclosure, many modifications are possible (e.g., variations in sizes, dimensions, structures, shapes and proportions of the various elements, values of parameters, mounting arrangements, use of materials and components, colors, orientations, etc.). For example, the position of elements may be reversed or otherwise varied and the nature or number of discrete elements or positions may be altered or varied. Accordingly, all such modifications are intended to be included within the scope of the present disclosure. The order or sequence of any process or method steps may be varied or re-sequenced according to alternative embodiments. Other substitutions, modifications, changes, and omissions may be made in the design, operating conditions and arrangement of the exemplary embodiments without departing from the scope of the present disclosure.

The present disclosure may contemplate methods, systems and program products on any machine-readable storage media for accomplishing various operations. The embodiments of the present disclosure may be implemented using existing computer processors, or by a special purpose computer processor for an appropriate system, incorporated for this or another purpose, or by a hardwired system. Embodiments within the scope of the present disclosure include program products comprising machine-readable storage media for carrying or having machine-executable instructions or data structures stored thereon. Such machine-readable storage media can be any available media that can be accessed by a general purpose or special purpose computer or other machine with a processor. By way of example, such machine-readable storage media can comprise RAM, ROM, EPROM,

EEPROM, CD-ROM or other optical disk storage, magnetic disk storage or other magnetic storage devices, flash memory, or any other medium which can be used to carry or store desired program code in the form of machine-executable instructions or data structures and which can be accessed by a general purpose or special purpose computer or other machine with a processor. Machine-readable storage media are tangible storage media and are non-transitory (i.e., are not merely signals in space). Combinations of the above are also included within the scope of machine-readable storage media. Machine-executable instructions include, for example, instructions and data which cause a general purpose computer, special purpose computer, or special purpose processing machines to perform a certain function or group of functions.

Although the figures may show a specific order of method steps, the order of the steps may differ from what is depicted. Also two or more steps may be performed concurrently or with partial concurrence. Such variation will depend on the software and hardware systems chosen and on designer choice. All such variations are within the scope of the disclosure. Likewise, software implementations could be accomplished with standard programming techniques with rule based logic and other logic to accomplish the various connection steps, processing steps, comparison steps, and decision steps.

What is claimed is:

1. A method for stabilizing power rate of change in an electrical power system using an electrical energy storage unit, the method comprising:

receiving electrical power from an initial source;
providing electrical power within the electrical power system;

receiving a notification that a first rate of change of electrical power is being provided to a first component of the electrical power system and a second rate of change of electrical power is being provided to a second component of the electrical power system;

charging the electrical energy storage unit with a load from the first and second component of the electrical power system;

monitoring the electrical energy storage unit and a parameter related to the load; and

based on the monitoring, if the load parameter is greater than the second rate of change of electrical power for the second component of the electrical power system, providing power from the electrical energy storage unit to the second component until the load parameter and the second component have equivalent rates of change of electrical power.

2. The method of claim 1, wherein the first component of the electrical power system comprises a device configured to operate using a generator.

3. The method of claim 2, wherein the device comprises at least one of an electric rope shovel, a long wall miner, and an electric power drill.

4. The method of claim 2, wherein the device comprises a mining excavator.

5. The method of claim 3, wherein the mining excavator comprises at least one of an electric shovel; and a dragline.

6. The method of claim 1, wherein the second component of the electrical power system comprises a generator.

7. The method of claim 1, further comprising:

if the electrical power system is operating with a regenerative load and the electrical energy storage unit is charged, absorbing, by a resistor, electrical power from the electrical power system.

8. The method of claim 1, further comprising:

if the load parameter is less than or equal to the rate of change of power for the second component of the electrical power system, recharging the electrical energy storage unit.

9. The method of claim 1, wherein the monitoring of the electrical energy storage unit and the load parameter is performed by an electrical energy storage unit control system.

10. The method of claim 9, wherein the electrical energy storage unit control system is integrated into the first component of the electrical power system.

11. The method of claim 1, wherein the electrical energy storage unit comprises at least one electrical energy storage unit.

12. An electrical power system for stabilizing power in an electrical power system using an electrical energy storage unit, the electrical power system comprising:

a first component;

a second component;

an electrical energy storage unit; and

a processor configured to:

receive electrical power from an initial source;

provide electrical power within the electrical power system;

receive a notification that a first rate of change of electrical power is being provided to a first component of the electrical power system and a second rate of change of electrical power is being provided to a second component of the electrical power system;

charge the electrical energy storage unit with a load from the first and second component of the electrical power system;

monitor the electrical energy storage unit and a parameter related to the load; and

based on the monitoring, if the load parameter is greater than the second rate of change of electrical power for the second component of the electrical power system,

provide power from the electrical energy storage unit to the second component until the load parameter and the second component have equivalent rates of change of electrical power.

13. The system of claim 12, wherein the first component of the electrical power system comprises a device configured to operate using a generator.

14. The system of claim 12, wherein the device comprises at least one of an electric rope shovel, a long wall miner, and an electric power drill.

15. The system of claim 12, wherein the second component of the electrical power system comprises a generator.

16. The system of claim 12, wherein the electrical energy storage unit comprises an electrical energy storage unit.

17. A non-transitory computer-readable medium having instructions therein, the instructions being executable by a processor to cause the processor to perform operations stabilizing power rate of change in an electrical power system using an electrical energy storage unit, the operations comprising:

receiving electrical power from an initial source;
providing electrical power within the electrical power system;

receiving a notification that a first rate of change of electrical power is being provided to a first component of the electrical power system and a second rate of change of electrical power is being provided to a second component of the electrical power system;

based on the monitoring, if the load parameter is greater than the second rate of change of electrical power for the second component of the electrical power system,

provide power from the electrical energy storage unit to the second component until the load parameter and the second component have equivalent rates of change of electrical power.

18. The system of claim 17, wherein the first component of the electrical power system comprises a device configured to operate using a generator.

19. The system of claim 17, wherein the device comprises at least one of an electric rope shovel, a long wall miner, and an electric power drill.

20. The system of claim 17, wherein the second component of the electrical power system comprises a generator.

charging the electrical energy storage unit with a load from the first and second component of the electrical power system;
monitoring the electrical energy storage unit and a parameter related to the load; and
based on the monitoring, if the load parameter is greater than the second rate of change of electrical power for the second component of the electrical power system, providing power from the electrical energy storage unit to the second component until the load parameter and the second component have equivalent rates of change of electrical power.

18. The non-transitory computer-readable medium of claim 17, the operations further comprising:

if the electrical power system is operating with a regenerative load and the electrical energy storage unit is charged, absorbing, by a resistor, electrical power from the electrical power system.

19. The non-transitory computer-readable medium of claim 17, the operations further comprising:

if the load parameter is less than or equal to the rate of change of power for the second component of the electrical power system, recharging the electrical energy storage unit.

20. The non-transitory computer-readable medium of claim 17, wherein the monitoring of the electrical energy storage unit and the load parameter is performed by an electrical energy storage unit control system.

* * * * *